



Glass Ionomer Cement Filling I

VinciSmile Filling I is an excellent self-adhesive, bulk glass ionomer cement that guarantees reliable and lasting restorations. Based on VinciSmile's proven filling application technology, Filling I provides stable performance and excellent operation experience. Sustained release of fluoride ions can prevent the occurrence of secondary caries. In addition, due to the good biocompatibility of the material, postoperative allergic reactions are almost eliminated.

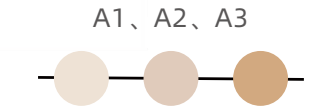
Stable/Easy/Aesthetic

Standard package:
15g powder+12g liquid + 1 measuring spoon + 1 mixing pad
Mini package:
5g powder+5g liquid + 1 measuring spoon + 1 mixing pad



VINCISMILE COLOR SYSTEM

Available in Shades A1,A2,A3



SUITABLE FOR A MULTITUDE OF CLINICAL CASES:

- Restoration of primary teeth
- Restorations of Class III, V and limited Class I cavities
- Base linings under composite and amalgam
- Core build-up
- * Ideal paediatric & geriatric restorative



COMPARED WITH OTHER COMPETITORS:

Product	Mixing Time	Working Time	Net Setting Time	Compression Strength
VinciSmile Filling I	<60s	2min20s	2min45s	>150Mpa
G* FU*	<40s	3min10s	3min05s	>150Mpa
G* FIX*	<30s	3min30s	3min10s	>150Mpa
SH* F*	<40s	2min25s	2min35s	>150Mpa

* Data From VinciSmile laboratory



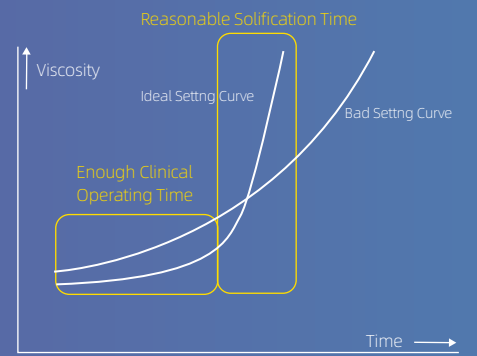
Glass Ionomer Cement

Universal Enhanced Glass Ionomer System
Convenient And Efficient Clinical Solutions



ADVANTAGES:

Reasonable setting curve well balances the time and viscosity, which guarantees the solidification happens in right operation time. As can be seen in the figure, the setting curve of VinciSmile GIC is relatively steep, which means the materials cured quickly in the patients mouth, minimizing the saliva contamination significantly.



DIRECTIONS FOR OPERATION:



VINCISMILE GROUP LLC
Add: 20524 Carrey Rd. Walnut, CA 91789, USA
Email: marketing@vincismile.com Tel: +1 626 283 5808
Web: www.vincismile.com Shop with us online at store.vincismile.com



Follow @VinciSmile

VinciSmile Glass Ionomer Cement

VinciSmile Glass Ionomer Cement (GIC), a unique system that includes adhesive cement and glass ionomer restorative materials, truly realizes a comprehensive system of high-performance clinical products. Filling I, Luting I and Luting II will meet all needs for aesthetic restorations and bonding. Unique new formulation provides excellent aesthetics, translucency, long-lasting anti-caries resistance and stability.

VinciSmile is committed to the research of glass ionomer material science to promote the development and popularization of the global...

That's why we're here:

BENEFITS FOR AN EFFICIENT CLINICAL SOLUTIONS:

- Excellent biocompatibility and good tissue response
- Chemically bonds to tooth structure for excellent edge sealing
- Optimum thixotropy and ideal film thickness
- Durable physical properties, high acid resistance and low oral solubility
- Ensures little postoperative sensitivity and good pulp response
- Resin-free, suitable for patients with resin allergies
- Easier to clean than resin-bonded materials
- No etching or bonding required for fast, easy and simple application
- Ideal for pediatric, geriatric and special needs patients.
- cost-effective
- X-ray resistance



VinciSmile Glass Ionomer Cement

VinciSmile Luting I is a truly biocompatible, quick-set, contemporary luting glass ionomer that guarantees reliable and lasting restorations.

Based on VinciSmile's proven self-adhesive bonding technology, Luting I provides stable performance, good flow, easy handling, promotes remineralization, improves acid resistance and reduces solubility through antimicrobial properties, while virtually eliminating post-operative hypersensitivity reactions.

Quick / Easy/ Ideal Film Thickness

Standard package:
30g powder + 25g liquid + 1 measuring spoon + 1 mixing pad
Mini Package:
10g powder + 10g liquid + 1 measuring spoon + 1 mixing pad



RESTORE A MULTITUDE OF CLINICAL CASES

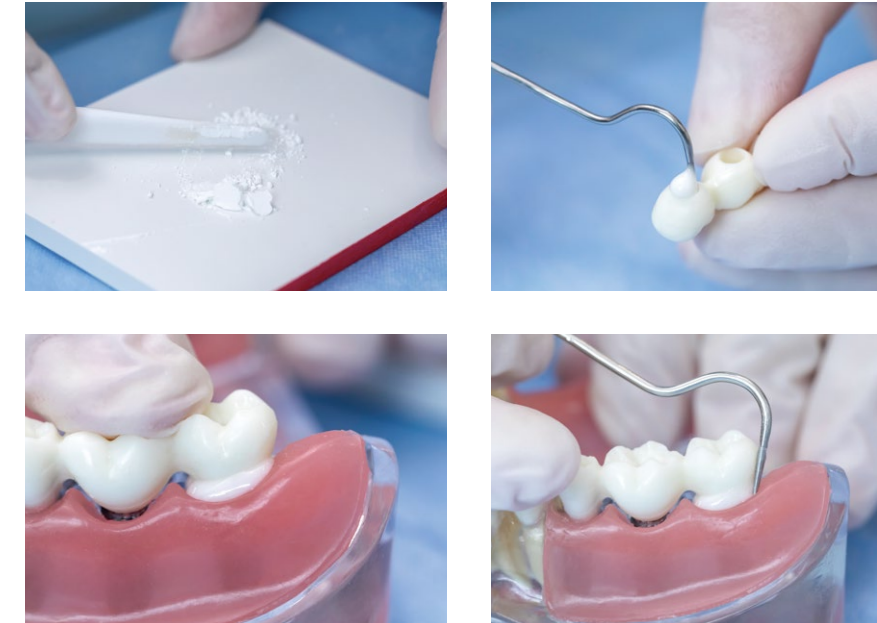
Indication		Luting I
Inlay/Onlay/ Crown/Bridge	Ceramic/Glass Ceramic	✓
	Oxide Ceramic	✓
	Metal/Metal-Based	✓
	Composite Resin	
Post/Screw	Metal	✓
	Oxide Ceramic	✓
Orthodontic Bands		✓

DIRECTIONS FOR OPERATION:



Quick / Easy/ Excellent Performance

*Glass ionomer materials are easier to clean than resin-bonded products, especially in the restorative areas of posterior teeth.



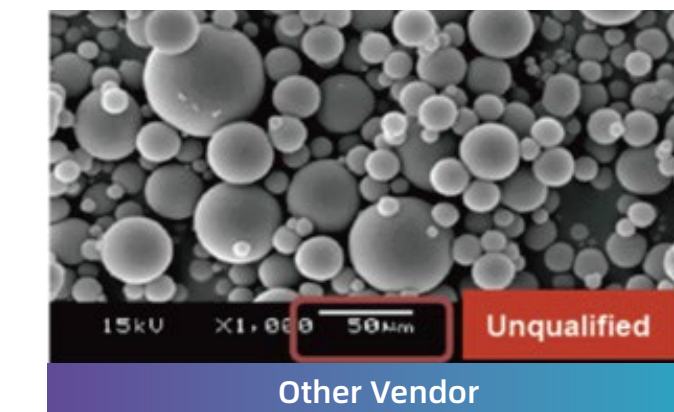
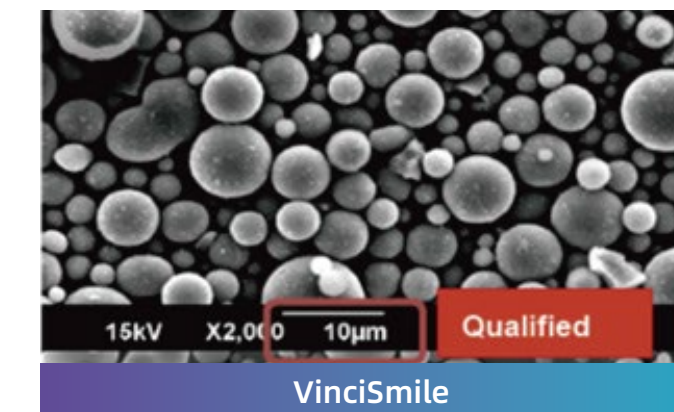
COMPARED WITH OTHER COMPETITORS

Product	Mixing Time	Working Time	Net Setting Time	Film Thickness
VinciSmile Luting I	45s	2min10s	3min05s	12µm
G* FU*	20s	2min40s	2min30s	18µm
3* Ke *	18s	3min02s	3min30s	22µm
VO**Me*	30s	2min17s	4min00s	25µm

* Data From VinciSmile laboratory

ADVANTAGES

The particle size of Huge GIC Luting is obviously smaller than most of other vendors.



VinciSmile Glass Ionomer Cement LuFill HS

LuFill HS is VinciSmile's new upgraded product. It is an excellent self-adhesive, bulk glass ionomer cement that guarantees reliable and lasting restorations. The high strength product performance makes this product perform well in routine clinical restoration.

SIMPLE OPERATION AND EXCELLENT PERFORMANCE

- Ideal particle size, easy mixing and good operating experience
- **High compressive (>200MPa) and flexural strengths** assure durability, longevity, and integrity
- Durable physical properties, high acid resistance and low oral solubility
- Continuous fluoride ion release ability to prevent secondary dental caries
- X-ray resistance

Standard package:
30g powder + 25g liquid + 1 measuring spoon + 1 mixing pad
Mini Package:
10g powder + 10g liquid + 1 measuring spoon + 1 mixing pad



VITA COLOR SYSTEM

LuFill HS comes in Vita color system. The color of the material is more consistent with the color of the teeth and has excellent aesthetic effects.

A2、A3、A3.5



TECHNICAL PARAMETERS

Technical Date	LuFill HS	
	For Luting	For Filling
Working time	2min10s	3min00s
Net setting time	3min15s	2min45s
Film thickness	13µm	/
Compressive strength	/	>200MPa

* All data from VinciSmile laboratory